

## GOVERNOR

THROTTLE LEVER LIMITING SCREW

NUT

GOVERNOR ARM SHAFT

THROTTLE LEVER

Rotate the governor arm shaft as far as it will go in the same direction the governor arm moved to open the throttle.  
Tighten the nut on the governor arm.

Maximum speed	3.850±150min <sup>-1</sup> (rpm)
---------------	----------------------------------

## VALVE CLEARANCE

FEELER GAUGE

VALVE

ROCKER ARM

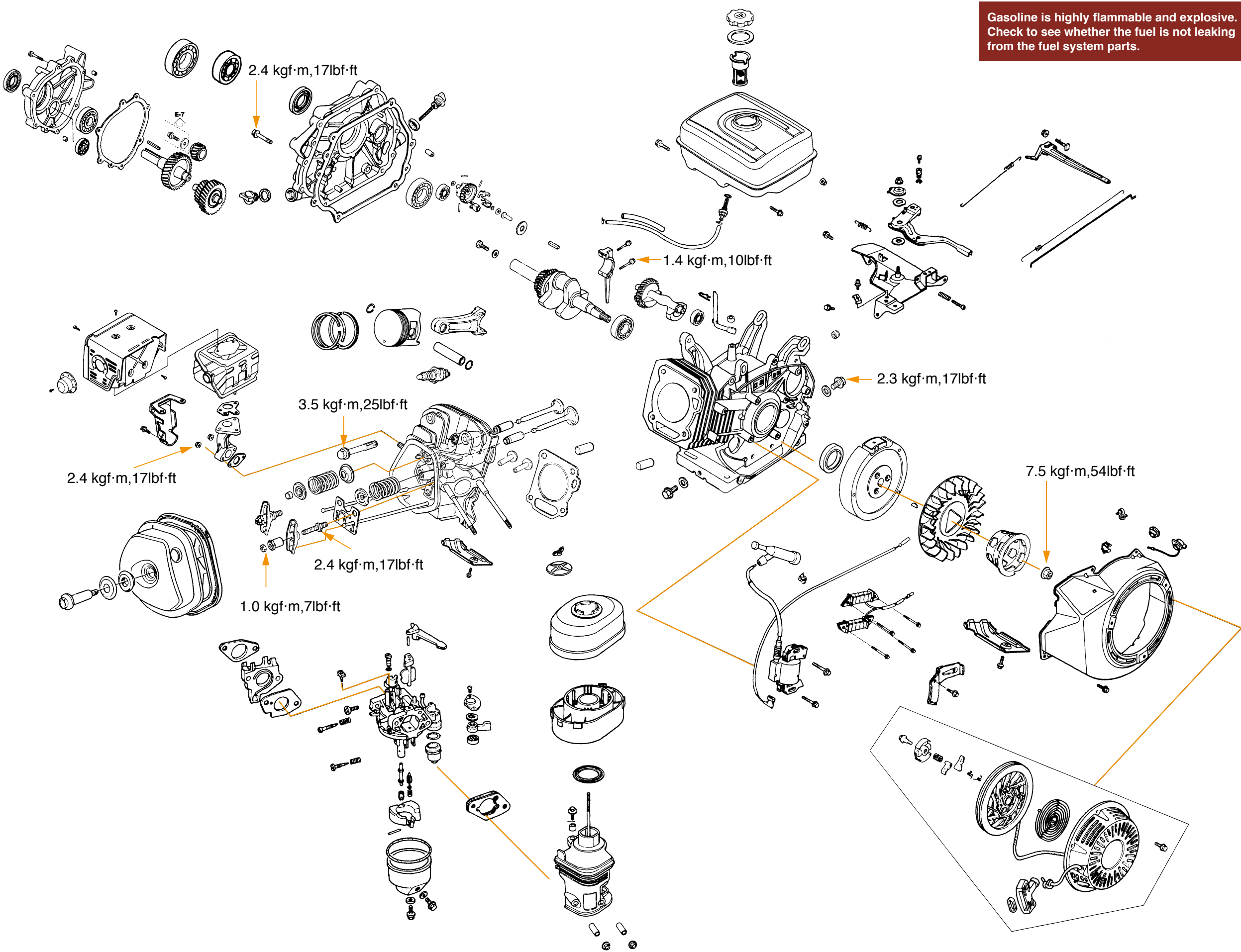
ROCKER ARM PIVOT

Standard valve clearance	IN	0.15±0.02mm (0.006±0.001 in)
	EX	0.20±0.02mm (0.008±0.001 in)

## IGNITION COIL AIR GAP

Specified clearance

0.4±0.2mm(0.016±0.008 in)
---------------------------



© Honda Motor Co., Ltd. Power Product Service Division.

## ENGINE OIL

OIL FILLER CAP/DIPSTICK

OIL DRAIN BOLT

SEALING WASHER

"UPPER" LEVEL

Engine oil capacity

1.1ℓ (1.16 US qt, 0.97 Imp qt)
--------------------------------

20W-40, 20W-50

10W-40

10W-30

AMBIENT TEMPERATURE

## AIR CLEANER

SOLVENT

ENGINE OIL

SQUEEZE THOROUGHLY

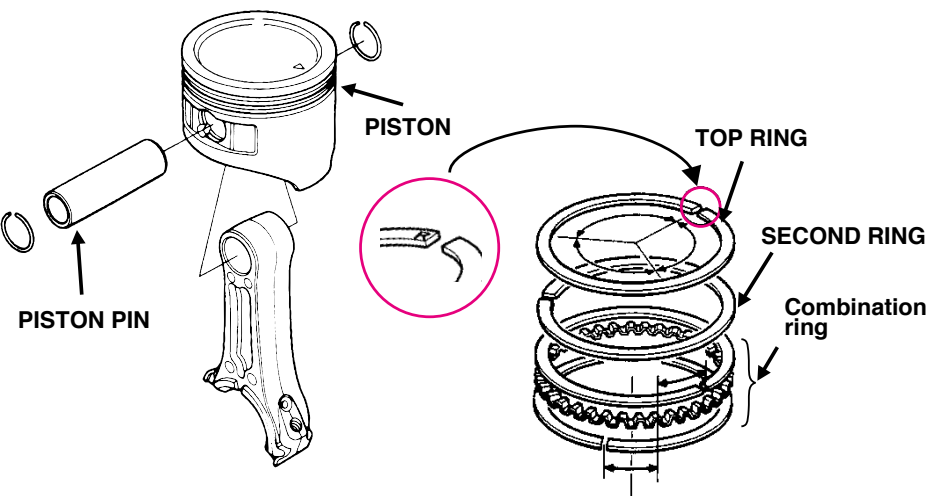
## SPARK PLUG

SIDE ELECTRODE

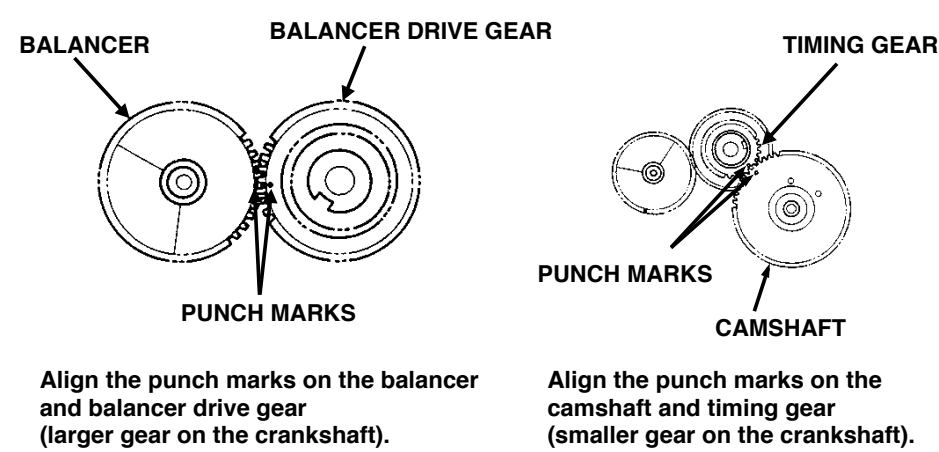
WIRE BRUSH

Spark plug gap	0.7-0.8mm (0.028-0.031 in)
Standard spark plug	BP6ES(NGK), W20EP-U(ND*) BPR6ES(NGK), W20EPR-U(ND*)

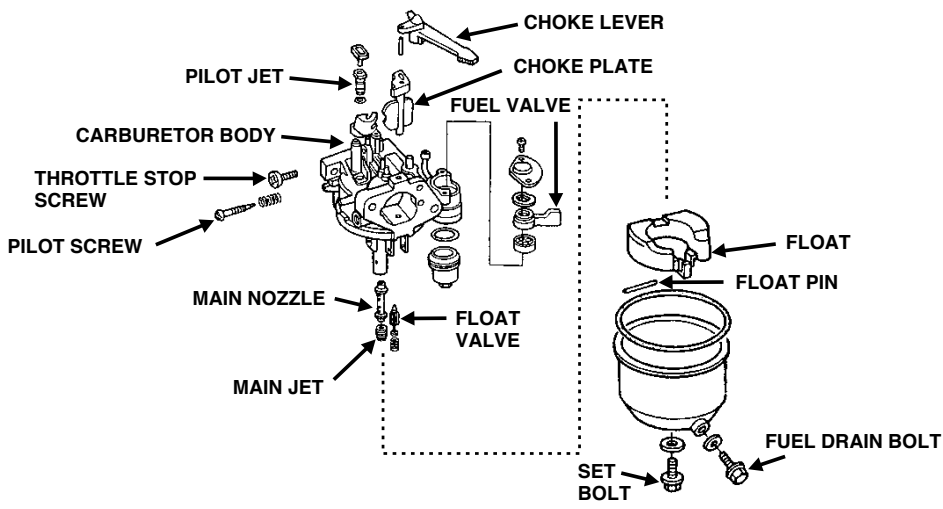
## PISTON DISASSEMBLY/REASSEMBLY



## CAMSHAFT



## CARBURETOR DISASSEMBLY/REASSEMBLY



## CARBURETOR REMOVAL/INSTALLATION

