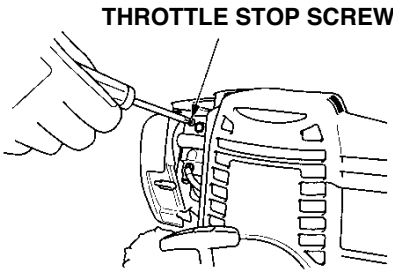


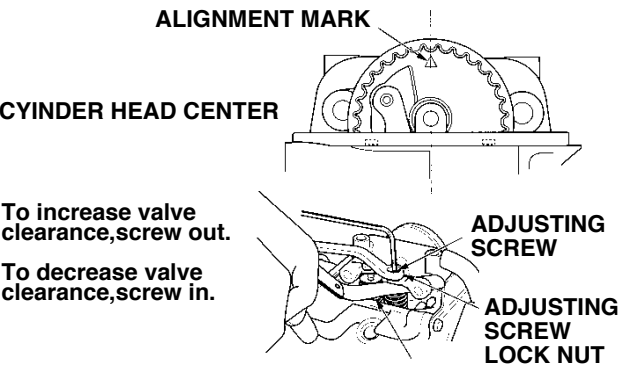
ADJUSTMENT THE IDLE SPEED



Adjustment:
Start the engine and allow it to warm up to normal operating temperature. Then, adjust the idle speed by turning the throttle stop screw right or left.

Standard idle speed	3.100±200rpm
---------------------	--------------

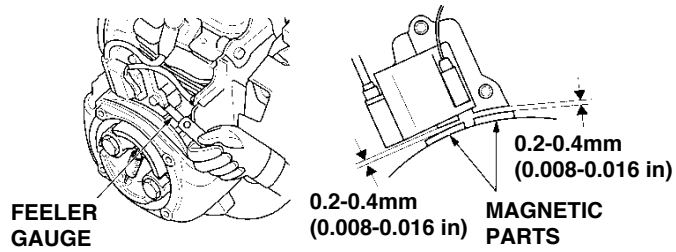
VALVE CLEARANCE



TORQUE: 4.9 N·m (0.5 Kgf·m, 3.9 lbf·ft)

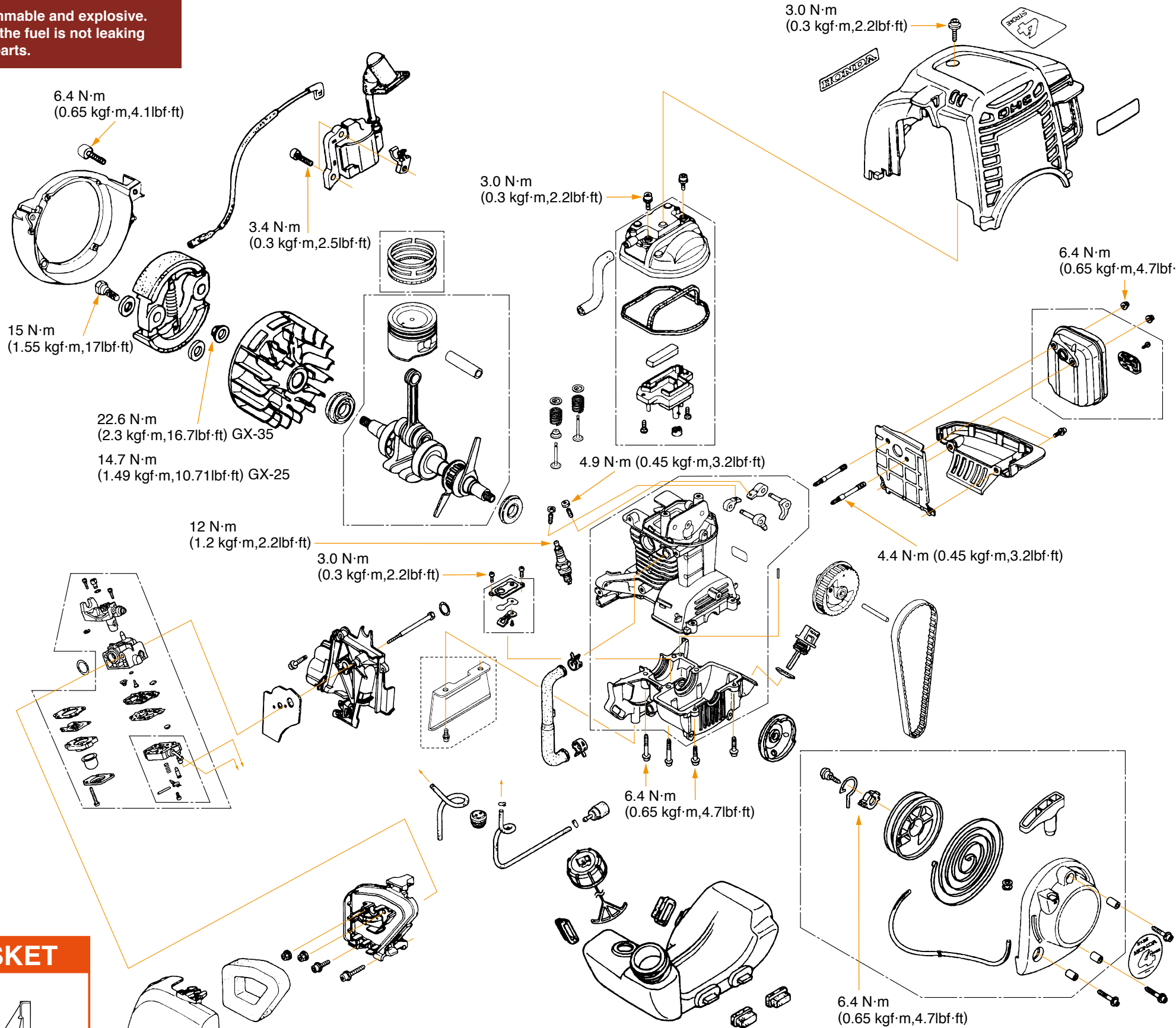
Standard valve clearance	IN	0.08±0.02mm
	EX	0.11±0.02mm

IGNITION COIL AIR GAP

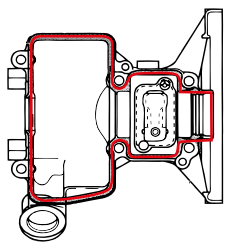


	Specified clearance
GX25	0.3-0.5mm (0.012-0.020 in)
GX35	0.2-0.4mm (0.008-0.016 in)

Gasoline is highly flammable and explosive.
Check to see whether the fuel is not leaking from the fuel system parts.

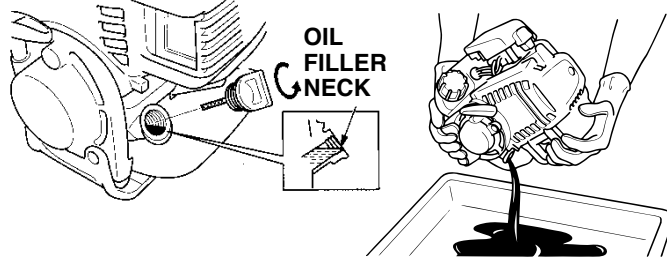


LIQUID GASKET

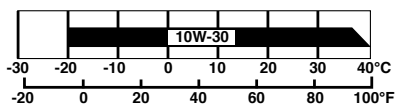


© Honda Motor Co., Ltd. Power Product Service Division.

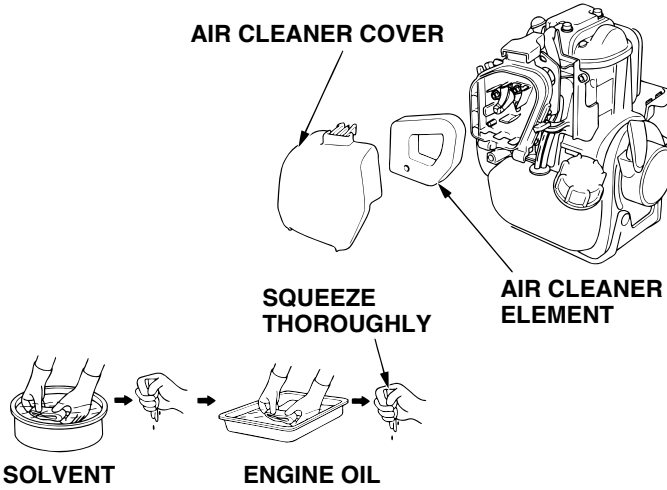
ENGINE OIL



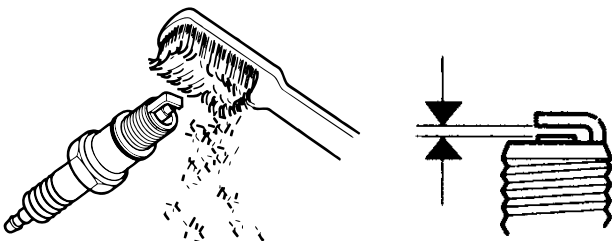
Honda recommends that you use API SERVICE category SF or SG oil.



AIR CLEANER

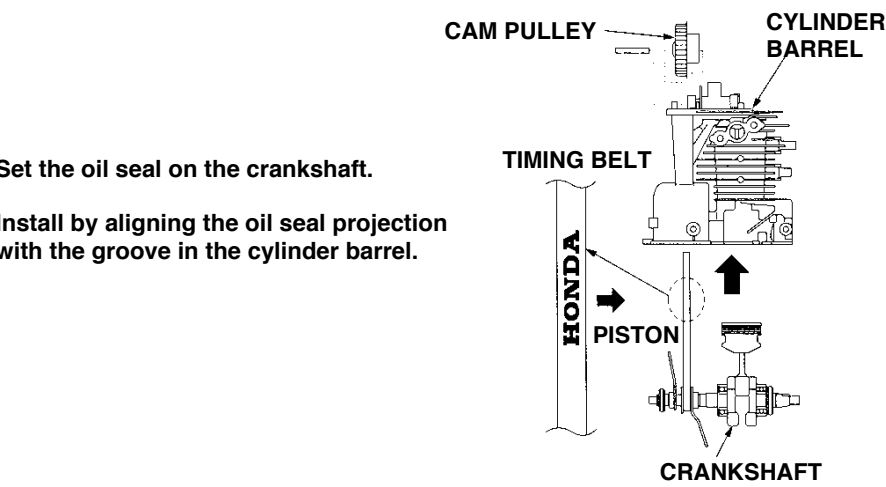


SPARK PLUG

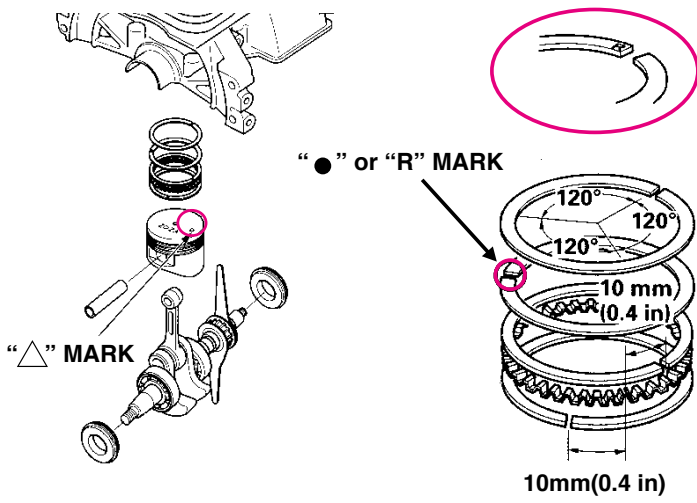


Spark plug gap	0.6-0.7mm (0.024-0.028 in)
Standard spark plug	CMR5H (NGK)

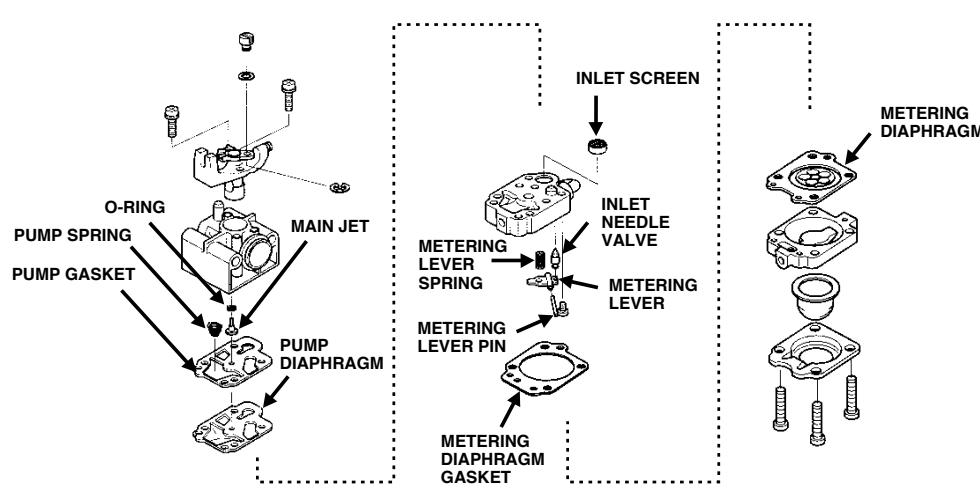
CRANKSHAFT/CAMPULLEY



CRANKSHAFT/PISTON



CARBURETOR DISASSEMBLY/REASSEMBLY



CARBURETOR REMOVAL/INSTALLATION

