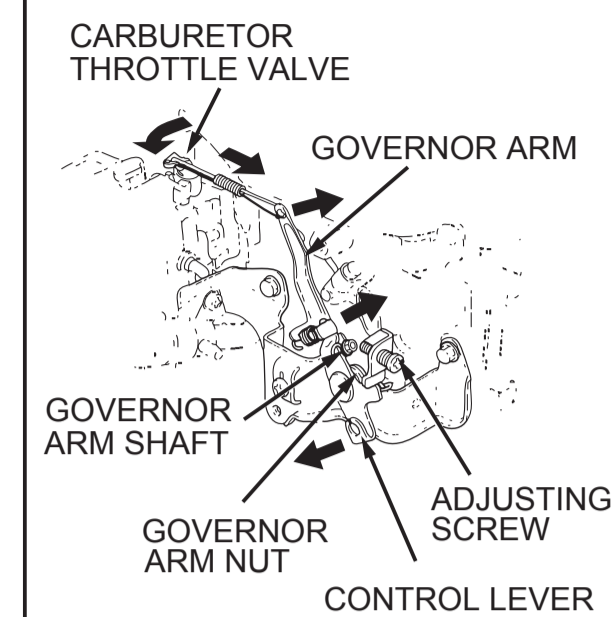


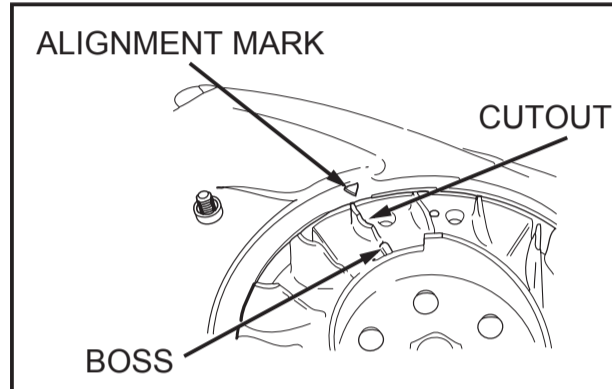
GOVERNOR



- 1) Remove the fuel tank.
- 2) Move the control lever to the "HIGH SPEED" position.
- 3) Loosen the governor arm nut on the governor arm.
- 4) Push the governor arm end toward the opposite side from the carburetor, and open the carburetor throttle valve fully.
- 5) Holding the carburetor throttle valve fully open, turn the governor arm shaft clockwise fully, and tighten the governor arm nut to the specified torque.
TORQUE: **7.0 N·m (0.7 kgf·m, 5.1 lbf·ft)**
- 6) Check to see whether the governor arm and the carburetor throttle valve operate smoothly.
- 7) Install the fuel tank. Start the engine and allow it to warm up to the normal operating temperature. Move the control lever to the maximum engine speed position and check the maximum engine speed.
Maximum engine speed (no load): **4,800 ± 200 min⁻¹ (rpm)**
- 8) Adjust the maximum engine speed, if necessary, by turning the adjusting screw in or out.

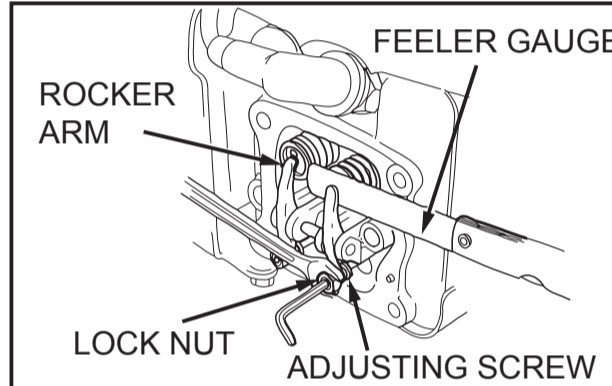
VALVE CLEARANCE

Valve clearance inspection and adjustment must be performed with the engine cold.



Pull the recoil starter rope and set the piston at top dead center of the compression stroke.
(Align the cutout in the flywheel fin or the boss on the flywheel with the alignment mark "on the fan cover.)

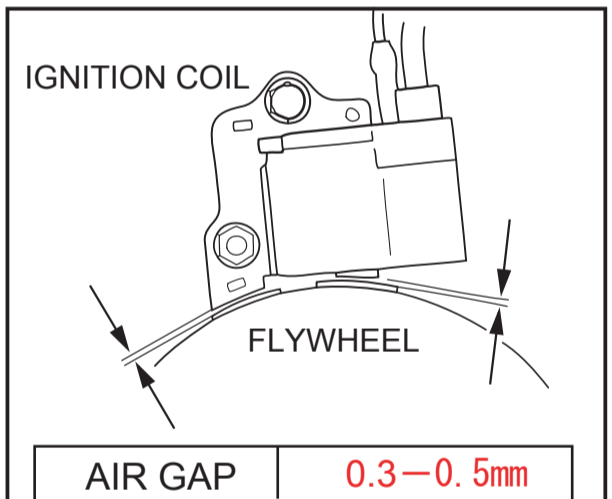
If the exhaust side opens when the cutout in the flywheel fin is in line with the alignment mark, turn the recoil starter pulley one turn and align the marks.



Insert a feeler gauge between the rocker arm and the valve and measure the valve clearance.

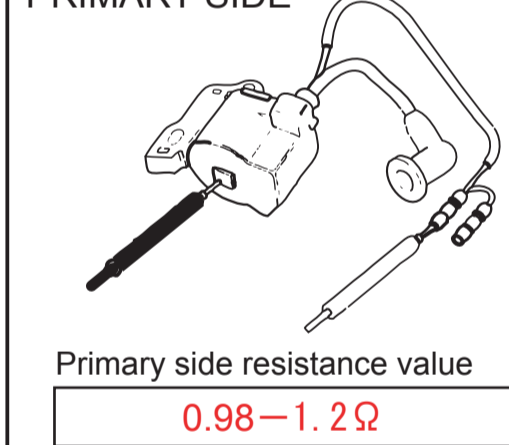
VALVE CLEARANCE **0.08 ± 0.02 mm (IN) 0.11 ± 0.02 mm (EX)**

IGNITION COIL



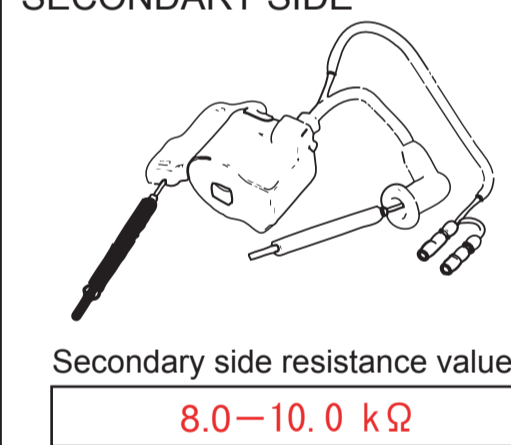
INSPECTION

PRIMARY SIDE



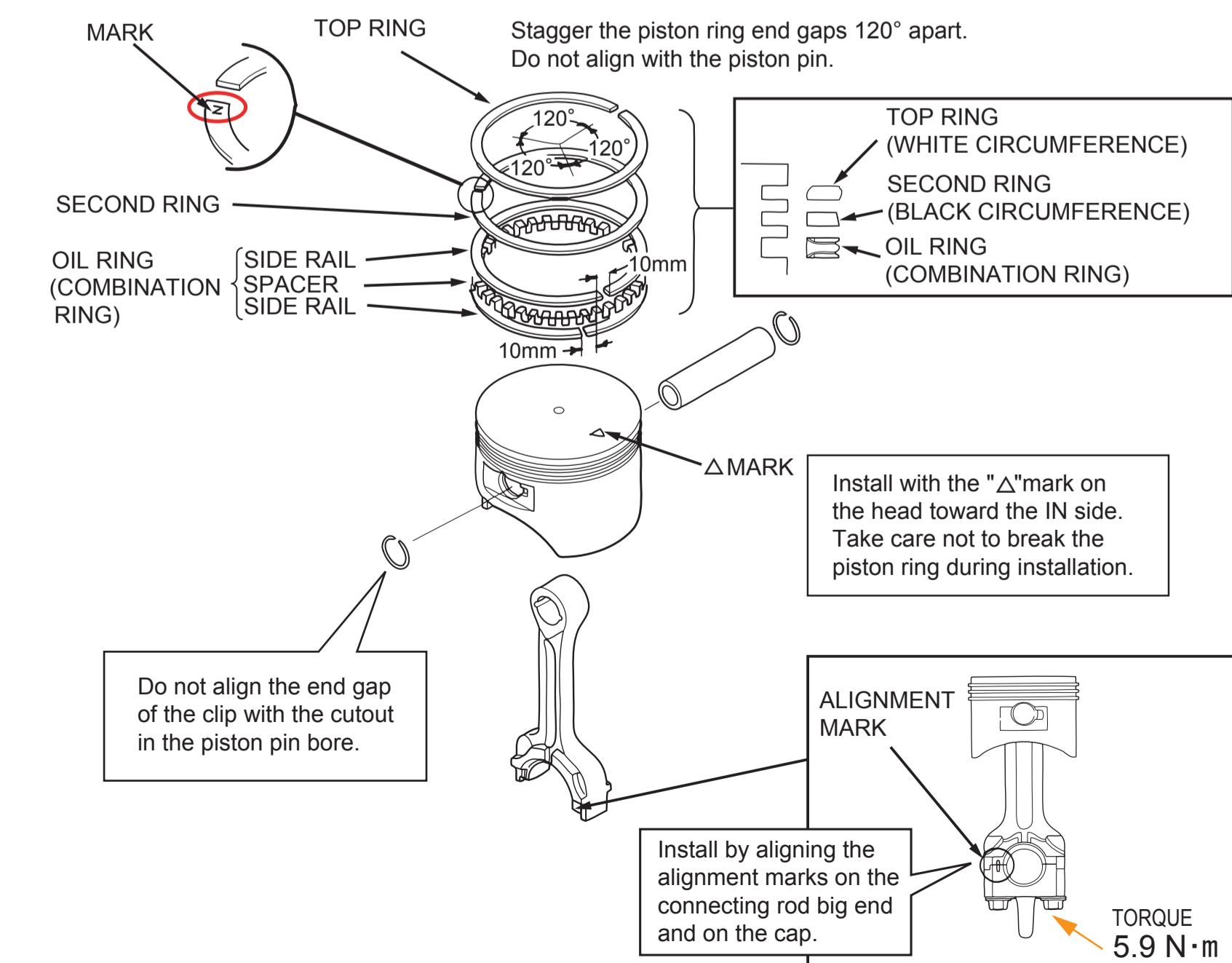
Primary side resistance value
0.98 - 1.2 Ω

SECONDARY SIDE



Secondary side resistance value
8.0 - 10.0 kΩ

PISTON DISASSEMBLY/REASSEMBLY



WARNING

Gasoline is highly flammable and explosive. Confirm no leaks are present in fuel system parts.

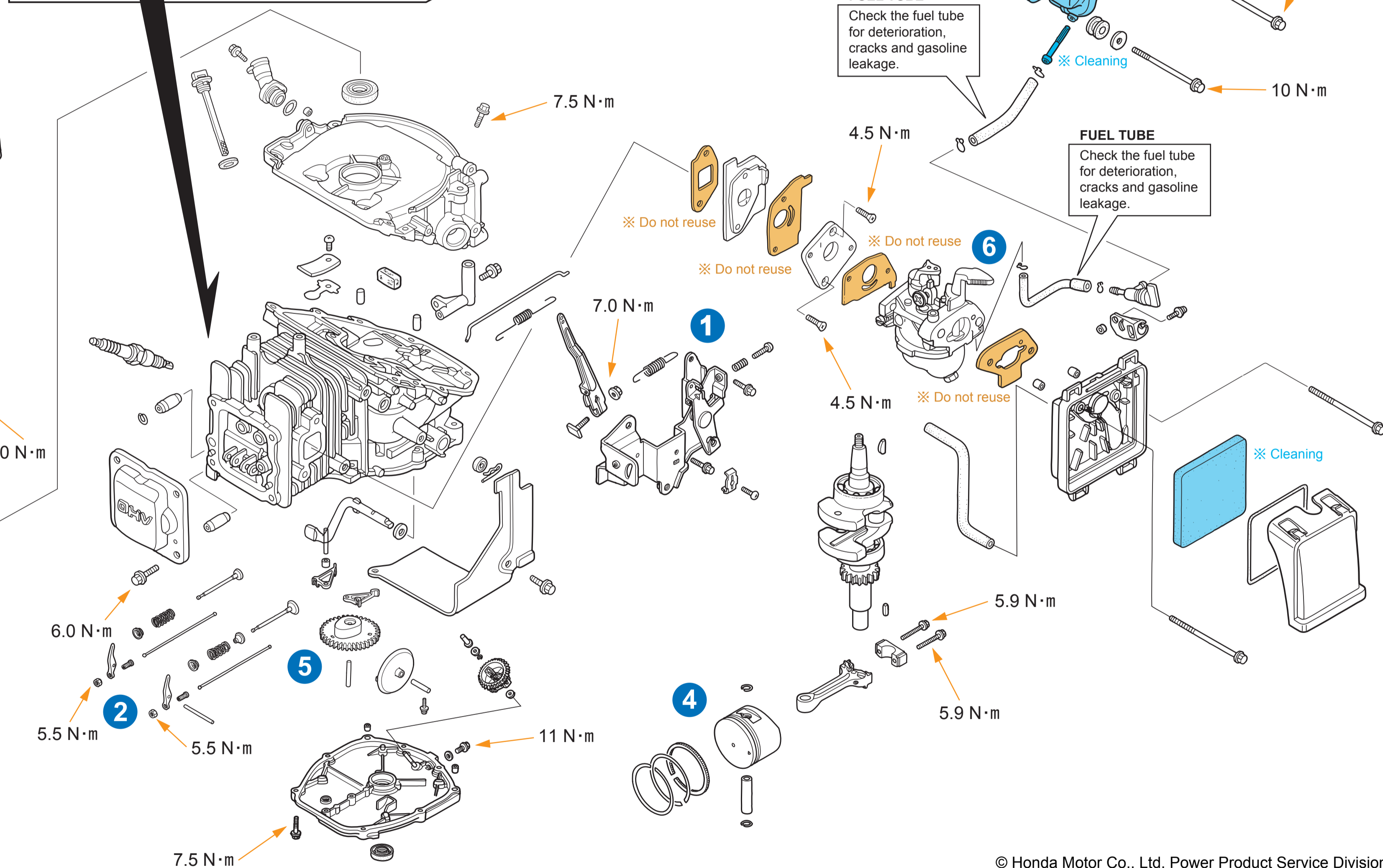
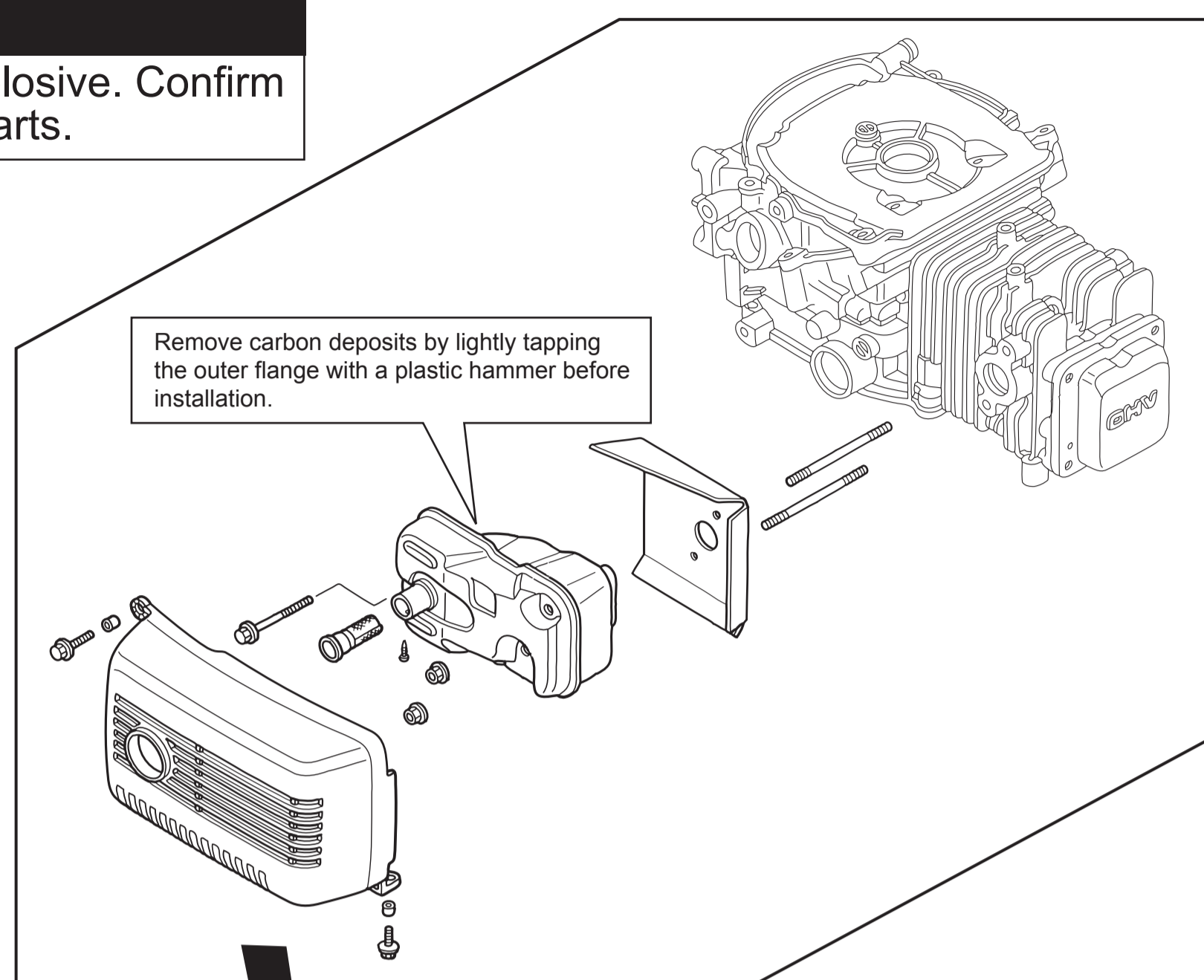
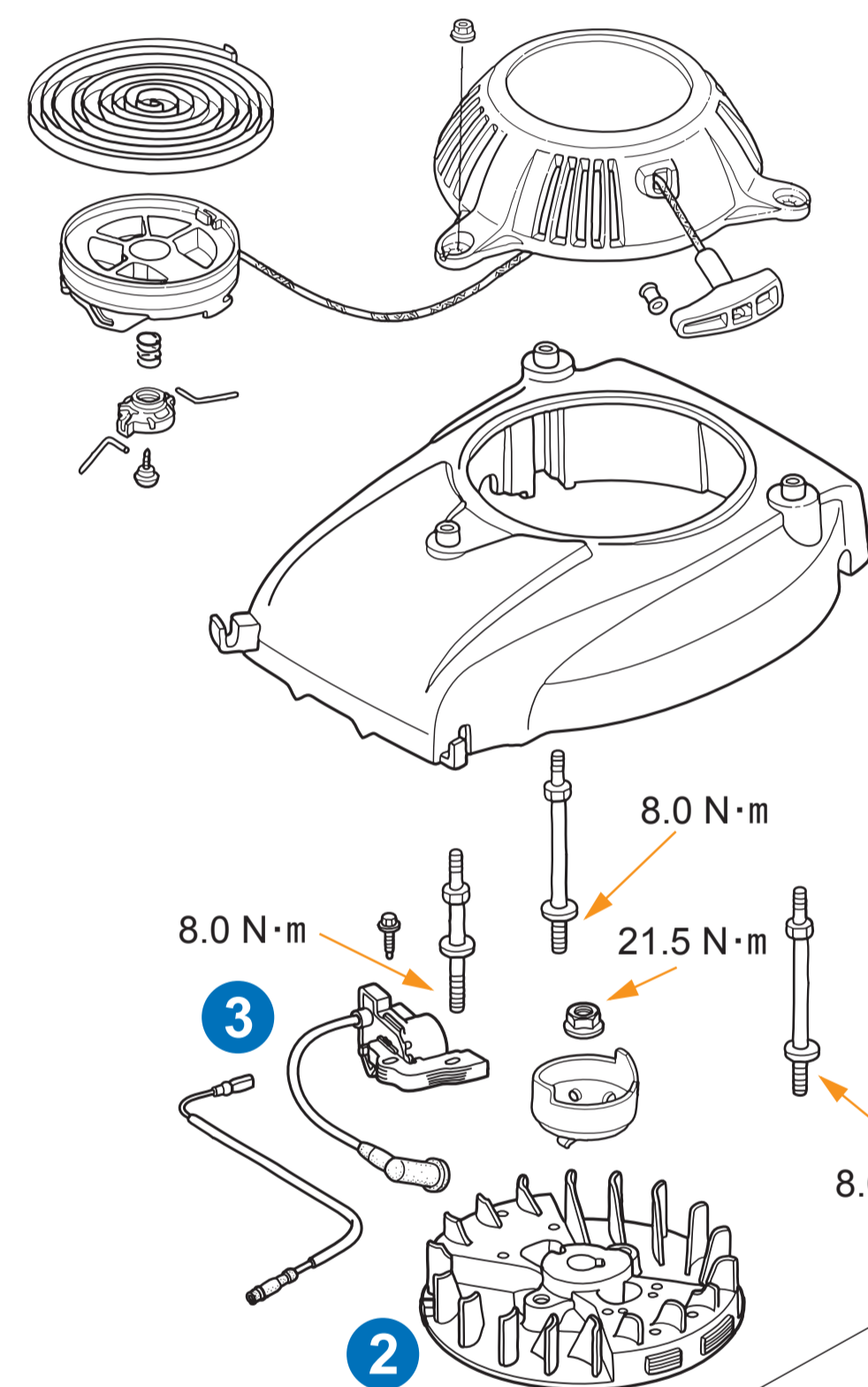
LIQUID GASKET

VALVE COVER

ThreeBond 1207B or equivalent
• Assemble within 3 minutes after applying the liquid gasket.
• Wait for 20 minutes after assembly. Do not add oil or start the engine during this period.

CYLINDER BLOCK CRANKCASE SIDE COVER

ThreeBond 1216E or equivalent
• Assemble within 3 minutes after applying the liquid gasket.
• Wait for 30 minutes after assembly. Do not add oil or start the engine during this period.



ENGINE OIL

Engine oil capacity 0.25 L (0.26 mUS qt, 0.22 Imp qt)

Recommended oil SAE 10W-30
API Service Classification SE, SF or SG

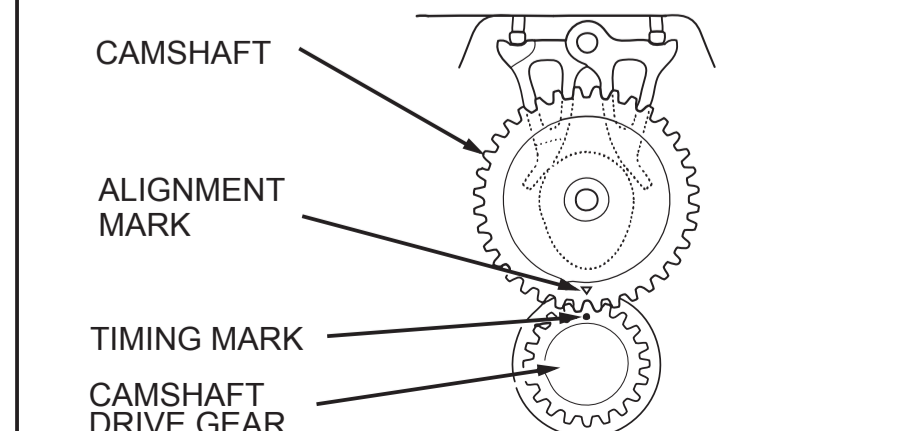
SPARK PLUG

Spark plug gap 0.6 - 0.7 mm (0.024 - 0.028 in)

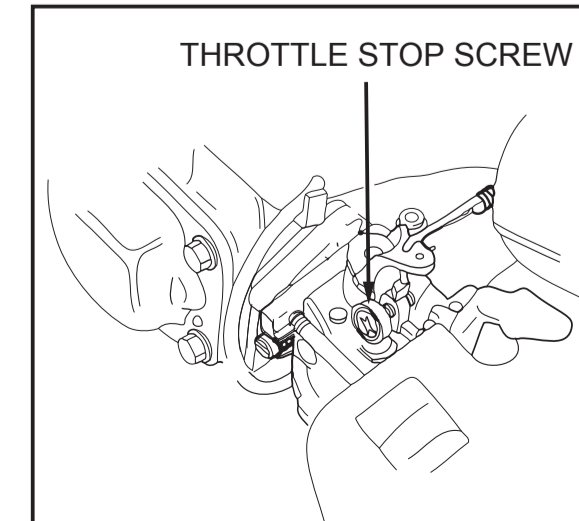
Recommended Spark plug NGK CR5HSB
DENSO U16FGR-UB

CAM SHAFT ASSEMBLY

Install the camshaft by aligning the alignment mark on the camshaft with the timing mark on the crankshaft.



CARBURETOR

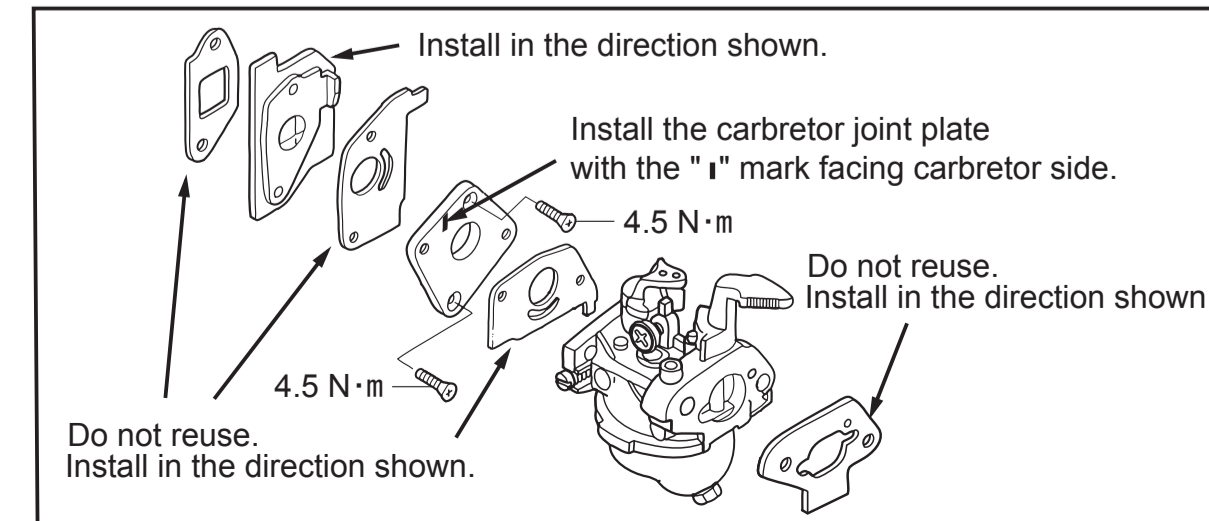


IDLE SPEED ADJUSTMENT

• Start the engine and allow it warm up to normal operating temperature.
• With the engine idling, turn the throttle stop screw in or out to obtain the standard idle speed.

Standard idle speed
2,500 ± 200 min⁻¹ (rpm)

REMOVAL / INSTALLATION



DISASSEMBLY / REASSEMBLY

