

HONDA Quick Reference Guide for Operation GXE2.0H Q3,Q4,S2,S3 type



* Read and understand the Owner's Manual before operating the DC Power Unit.

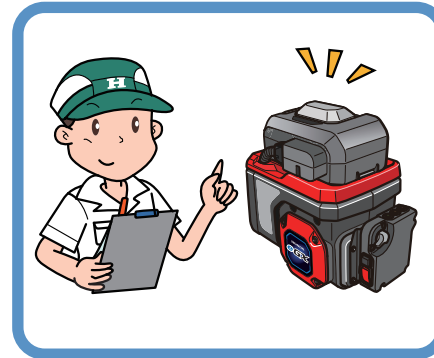
BATTERY CHARGE LEVEL

BATTERY PACK

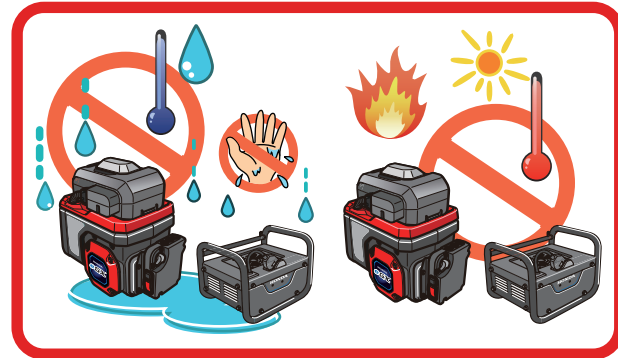
CHECK

Fully charged
 Sufficiently charged
 Low battery power
 Charge Battery Pack

Pre-operation check!



Safety Precaution



MOTOR UNIT

1 START
 2 POWER
 3 STOP
 4 BATTERY PACK

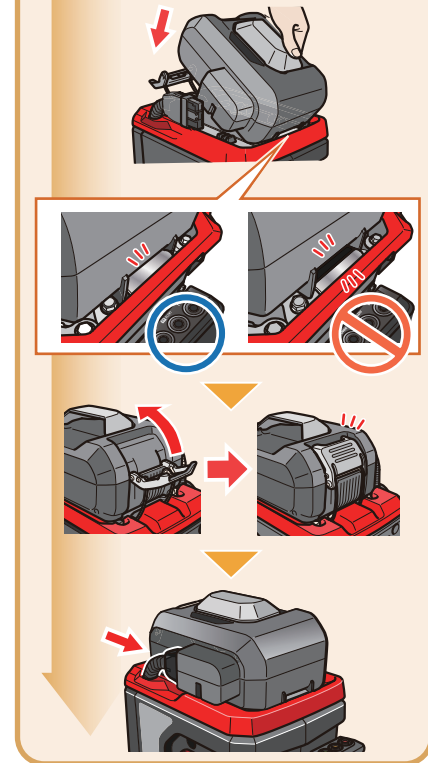
BATTERY CHARGER

Charging temperature range 5 to 30 °C

Charge

Plug IN

Attach Battery Pack



How to start

- Press STOP
- Press POWER
- Press START
- Change Speed

Operating temperature range -15 to 40 °C

All LED ON
 Green LED ON

MIN. MAX. RPM

How to stop

- Press STOP

Green LED OFF



Maintenance Schedule

👁️ : Check 🔄 : Change 🧽 : Clean

Regular Service Period	Each use	Every 5 years or 500 hrs.
Exterior	👁️	Check not damaged
1 Switch Speed control lever	👁️	(Applicable type)
2 LED	👁️	(Applicable type)
3 Power cable	👁️	Check not damaged
4 Battery fastener	👁️	Check not damaged
5 Rubber support	👁️	Check not damaged
6 Battery hook	👁️	Check not damaged

Wire harness	🔄	If necessary
Battery fastener	🔄	
Rubber support	🔄	
Battery hook	🔄	
Rubber mount	🔄	
Stopper bolt	🔄	
Stopper rubber	🔄	
Drain hole	🧽	
Set speed	👁️	When required If an unusual sound is heard

Take the DC Power Unit to your Honda servicing dealer.

* Read and understand the Owner's Manual before operating the DC Power Unit.

1 Switch Speed control lever

Check work properly (start and stop) (change speed)

2 LED Check all LED light ON when POWER is turned on

1: Battery hook
2: LED
3: Drain hole
4: Battery fastener
5: Rubber support
6: Battery hook

Storage Storage temperature range **-5 to 30°C**

- Long-term storage is not possible → Use Battery Pack to discharge
- Long-term storage is possible
- Long-term storage is not possible → Charge Battery Pack

CHECK

Remove the Battery Pack

Unplugged