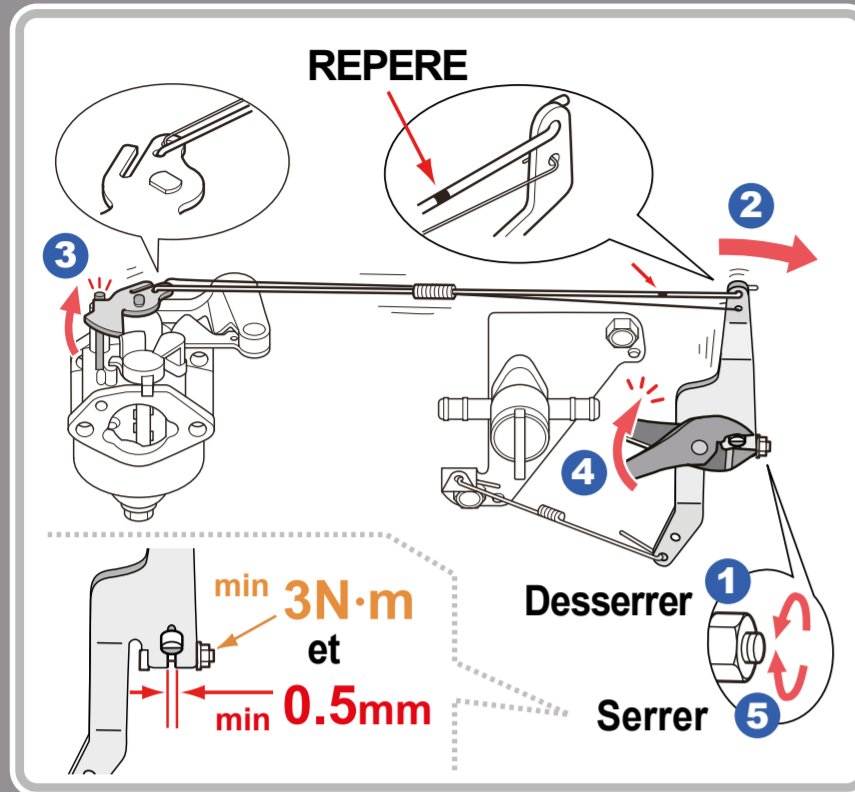
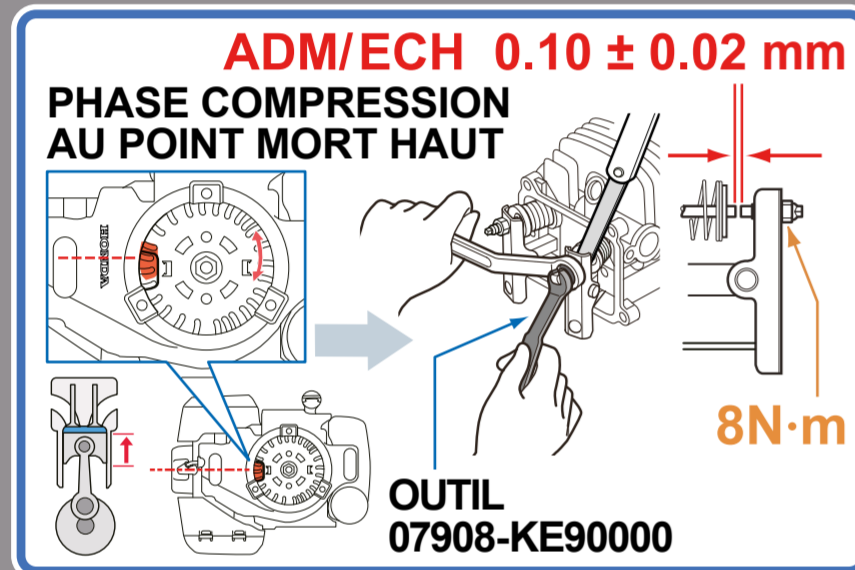


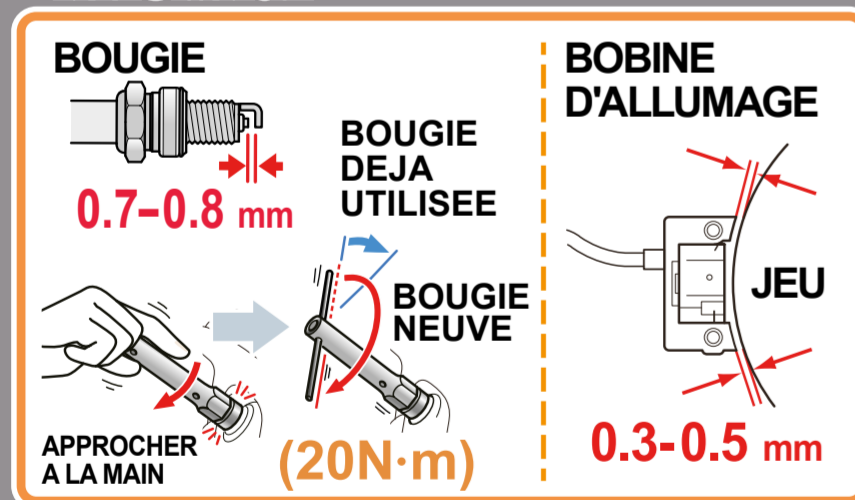
REGULATEUR



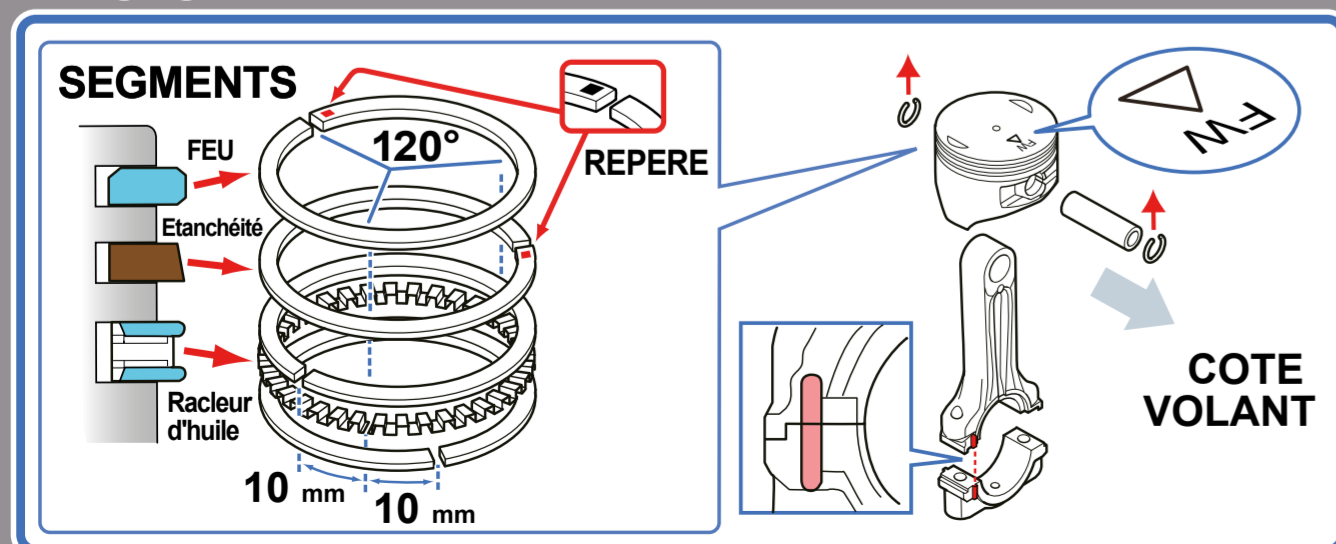
JEUX AUX CULBUTEURS



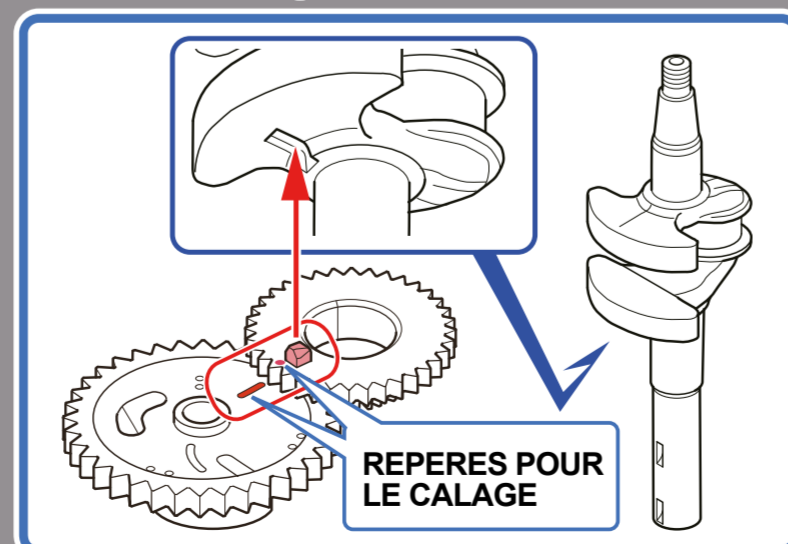
ALLUMAGE



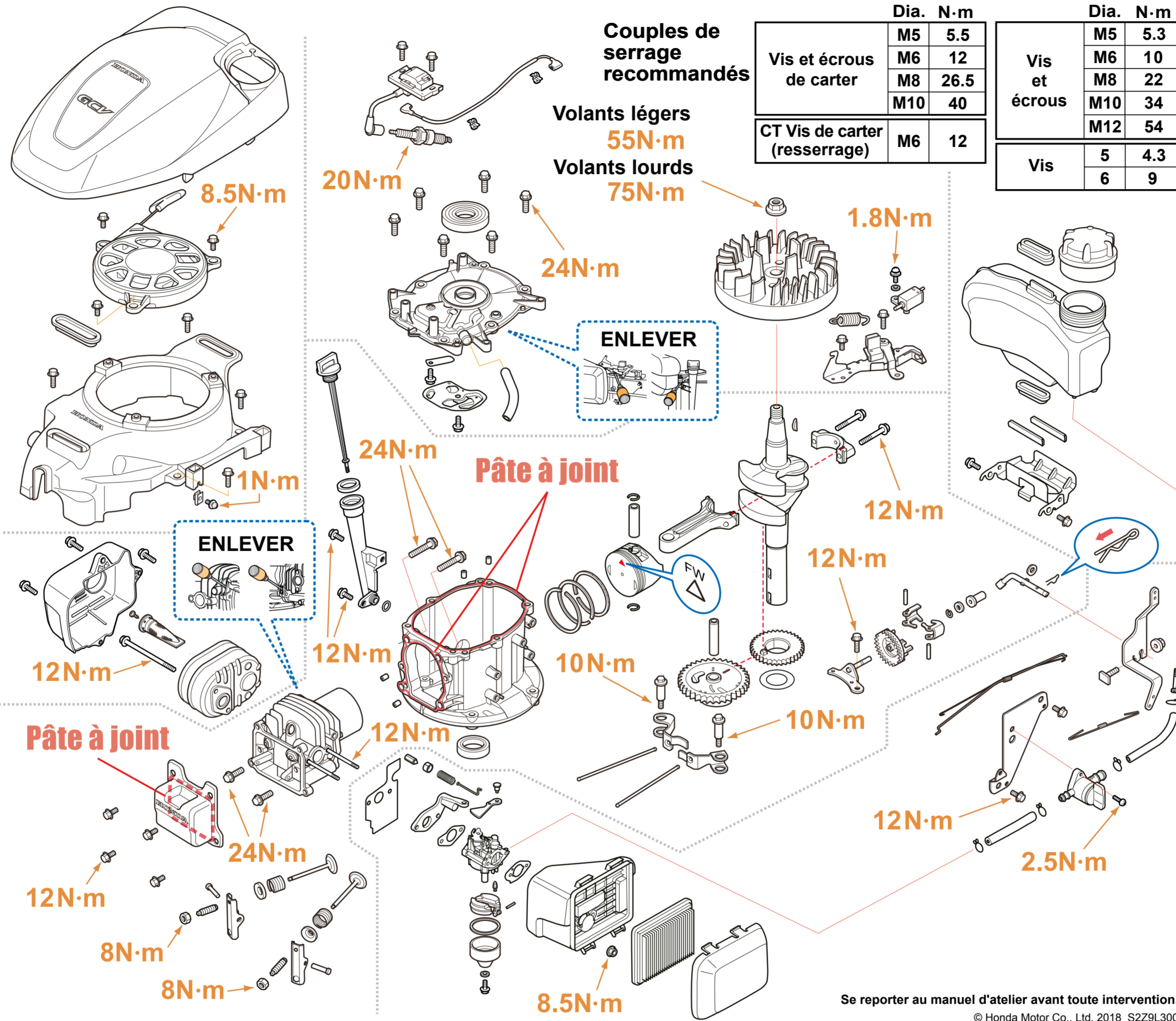
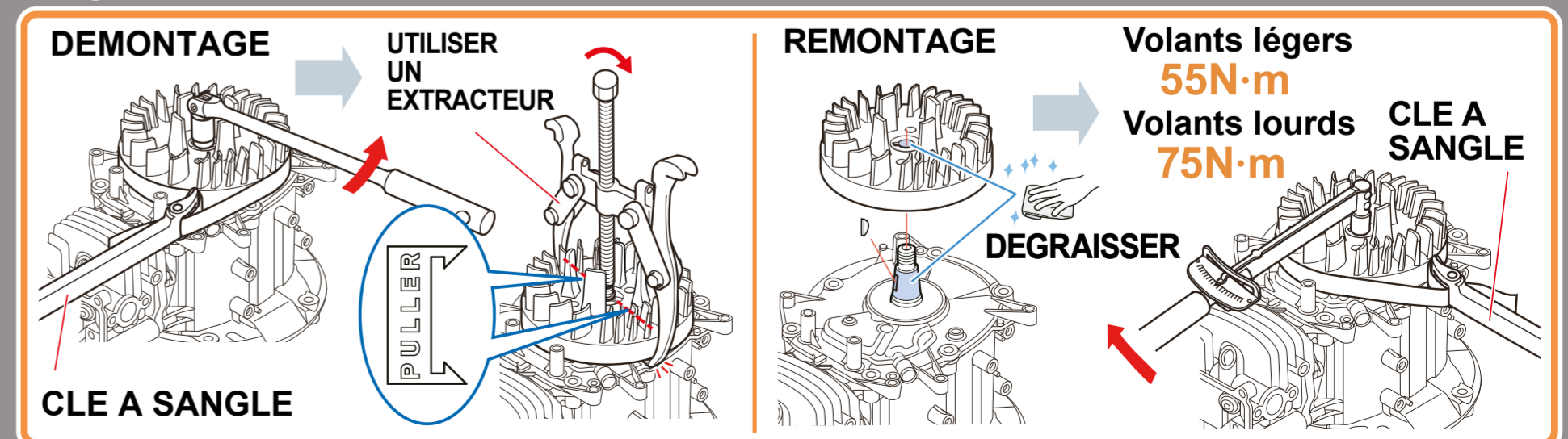
PISTON



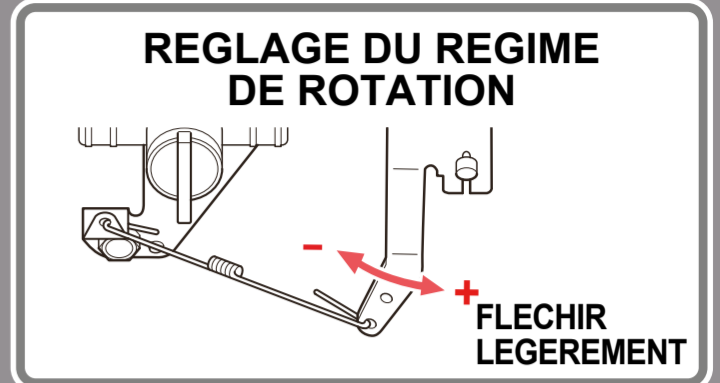
ARBRE A CAME



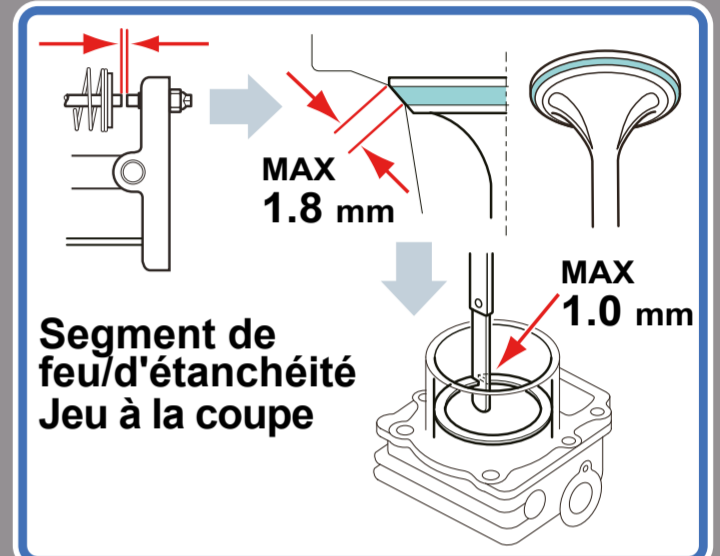
VOLANT



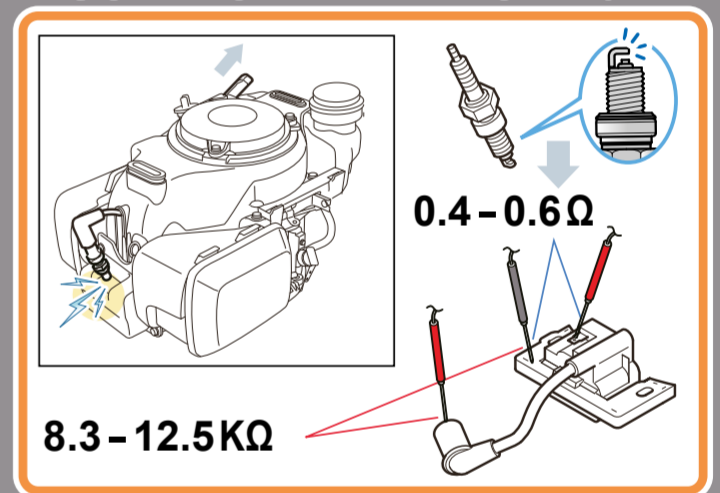
Se reporter au manuel d'atelier avant toute intervention.
© Honda Motor Co., Ltd. 2018 S2Z9L300



CONTROLE DE LA COMPRESSION



CONTROLE DE L'ALLUMAGE



CONTROLE CIRCUIT CARBURANT

