

Battery Indication

A

To check the battery status by the indicator, press the check button while the battery pack is not activated (as a single part).

			High or Low Temperature Protection CAN No Communication Protection
			Overvoltage Protection
			Undervoltage Protection
			Overcurrent Protection Short-circuit Protection
			Malfunction

Power Unit Indication

POWER ALERT ERROR

Stop

Stop

Stop

Continuing Operation → **Stop To Cool Down**

- Malfunction
- Overtemperature Abnormality
Motor Lock Failure
Overcurrent Abnormality
Undervoltage / Overvoltage Abnormality
Misoperation (Starting Interlock)
- Overtemperature Warning

Charger Indication

HONDA

POWER ERROR

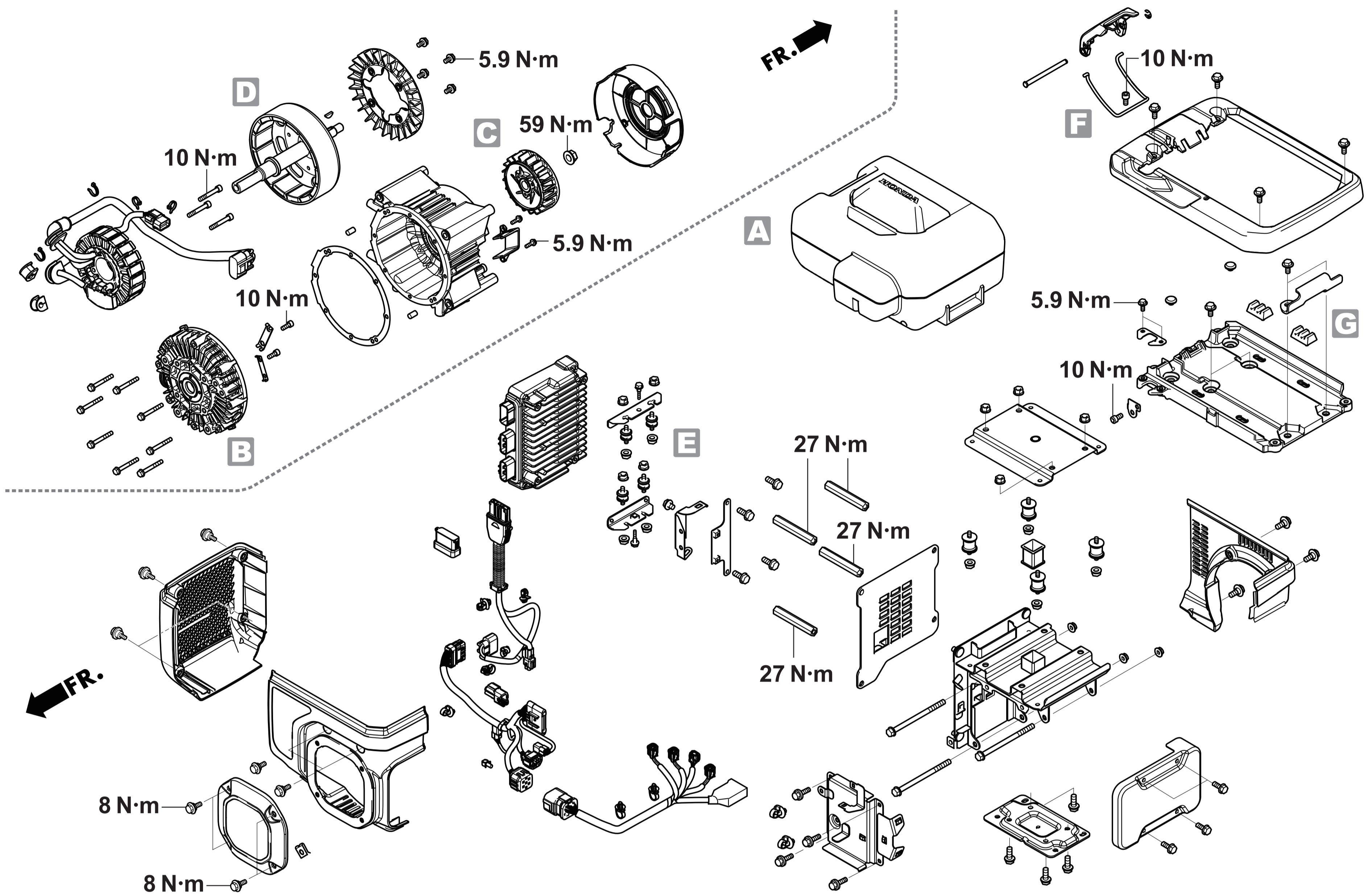
Nomal **AC Plug Connection**

Error

Charging Stop

Ac Plug Disconnection

- Charger Output Abnormality
Overvoltage
Low Voltage
Current Abnormality
- Charger Temperature Abnormality
- Charger Voltage Abnormality
Charger Shorted
- CAN Communication Error
Internal Voltage Abnormality

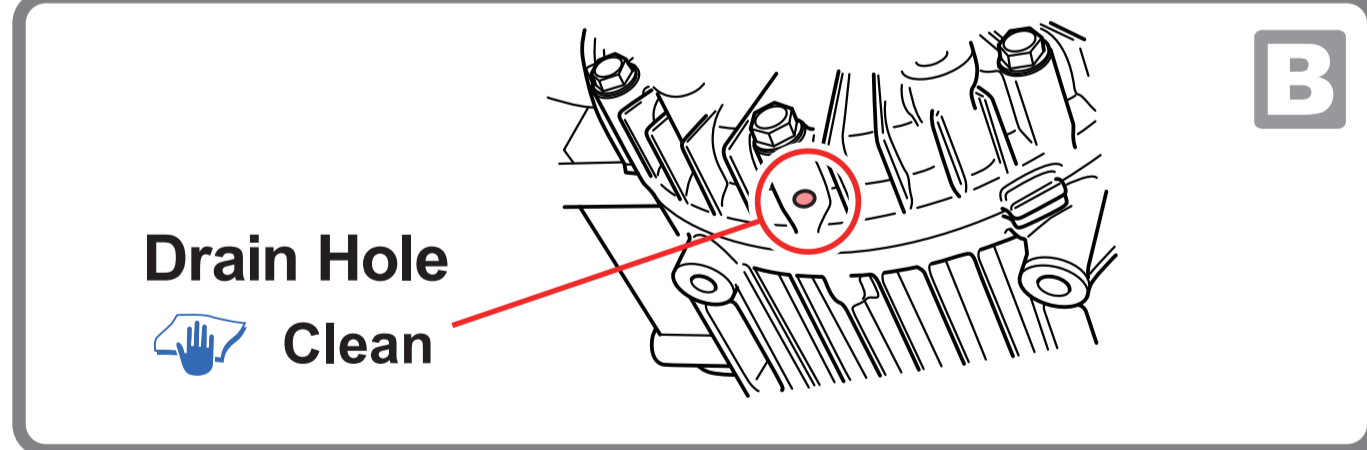


Standard Torque Values

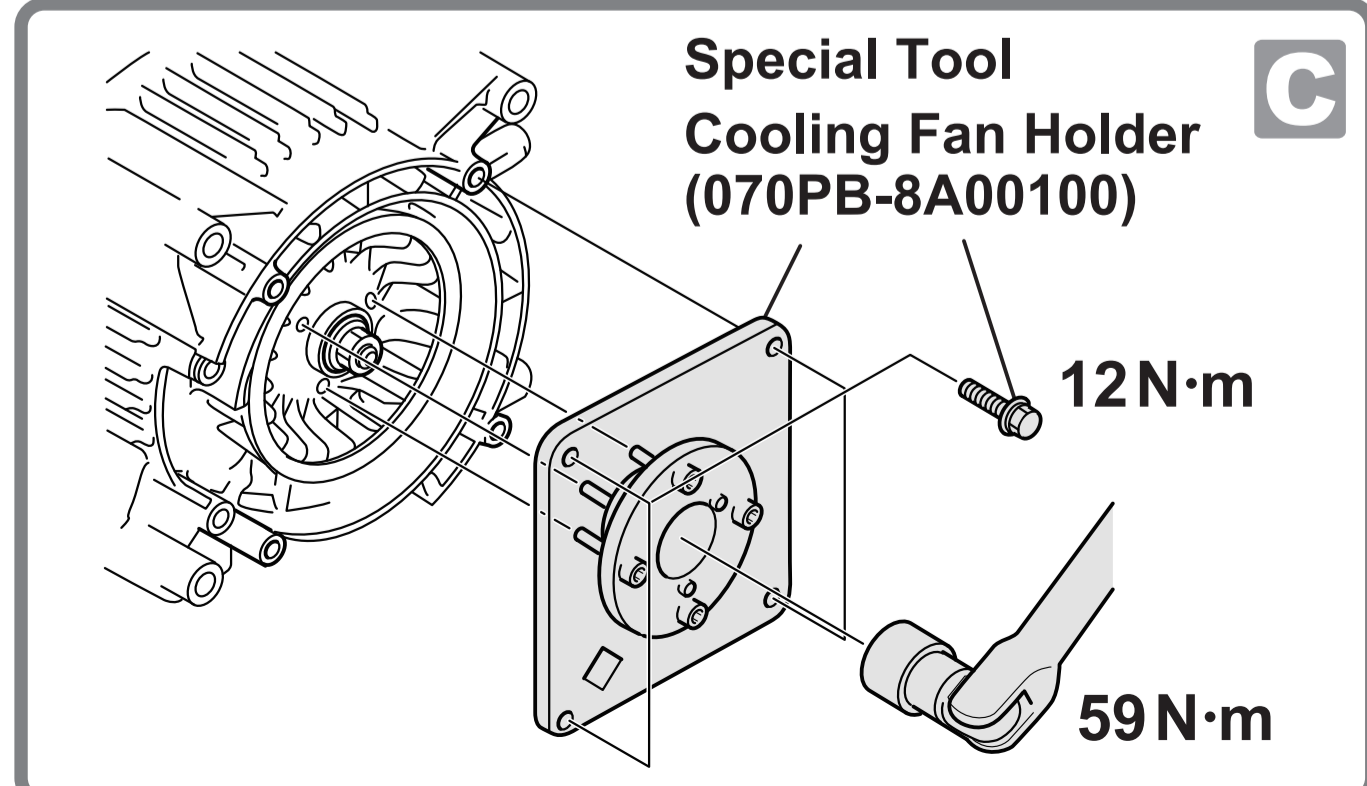
Item	Size	Torque (N·m)
Screw	M3	1.0
	M4	2.0
	M5	4.2
	M6	9
	M5	5.2
	M6	10
Bolt Nut	M8	22
	M10	34
	M12	54
Flange Bolt Flange Nut	M6	12
	M8	27
SH Flange Bolt (8mm head, small frange)	M6	10
	M10	39
NSHF Flange Bolt (8mm head, large frange)	M6	10
	M10	39

BATTERY **POWER UNIT**
CHARGER

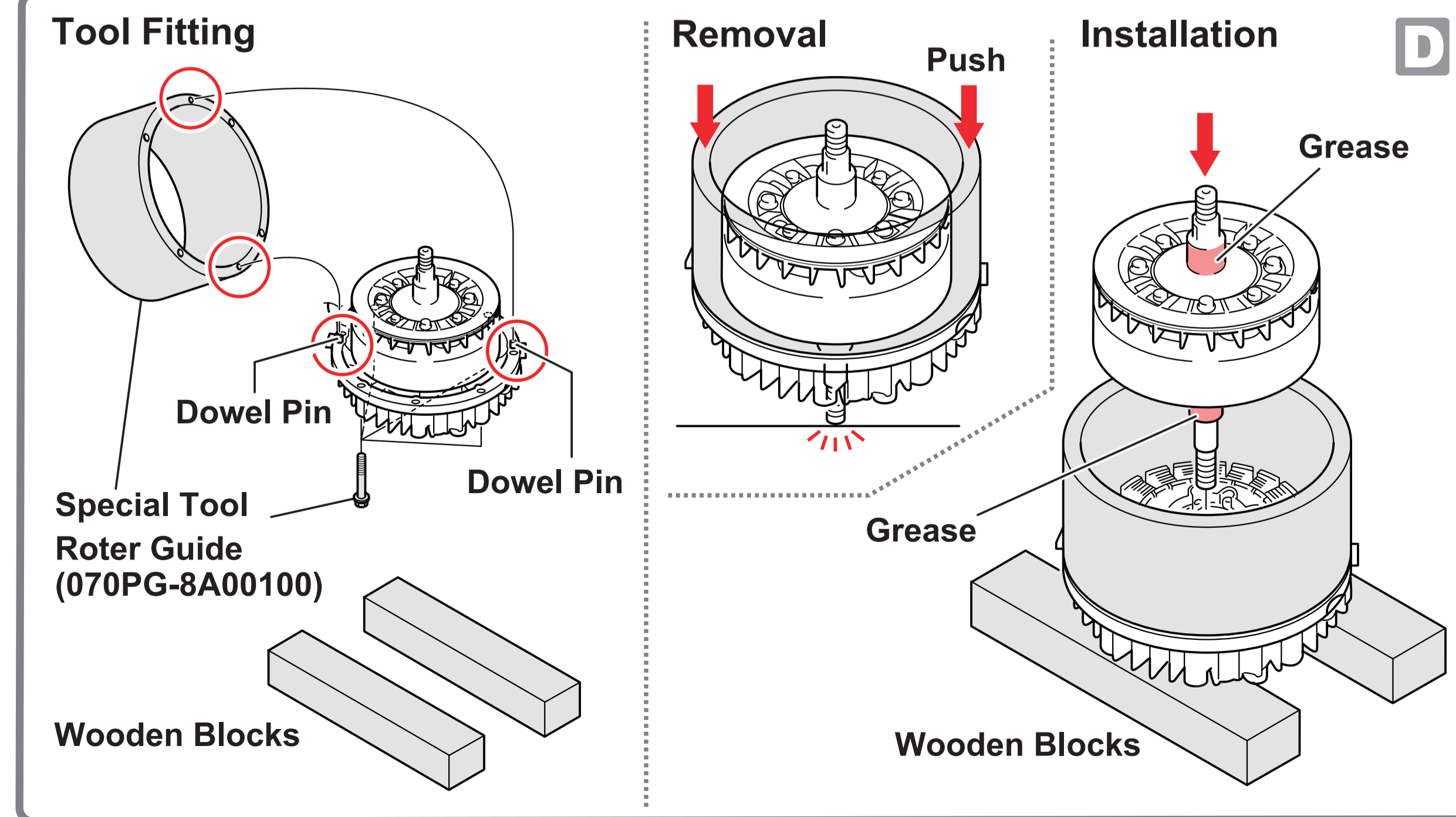
Drain Hole Cleaning



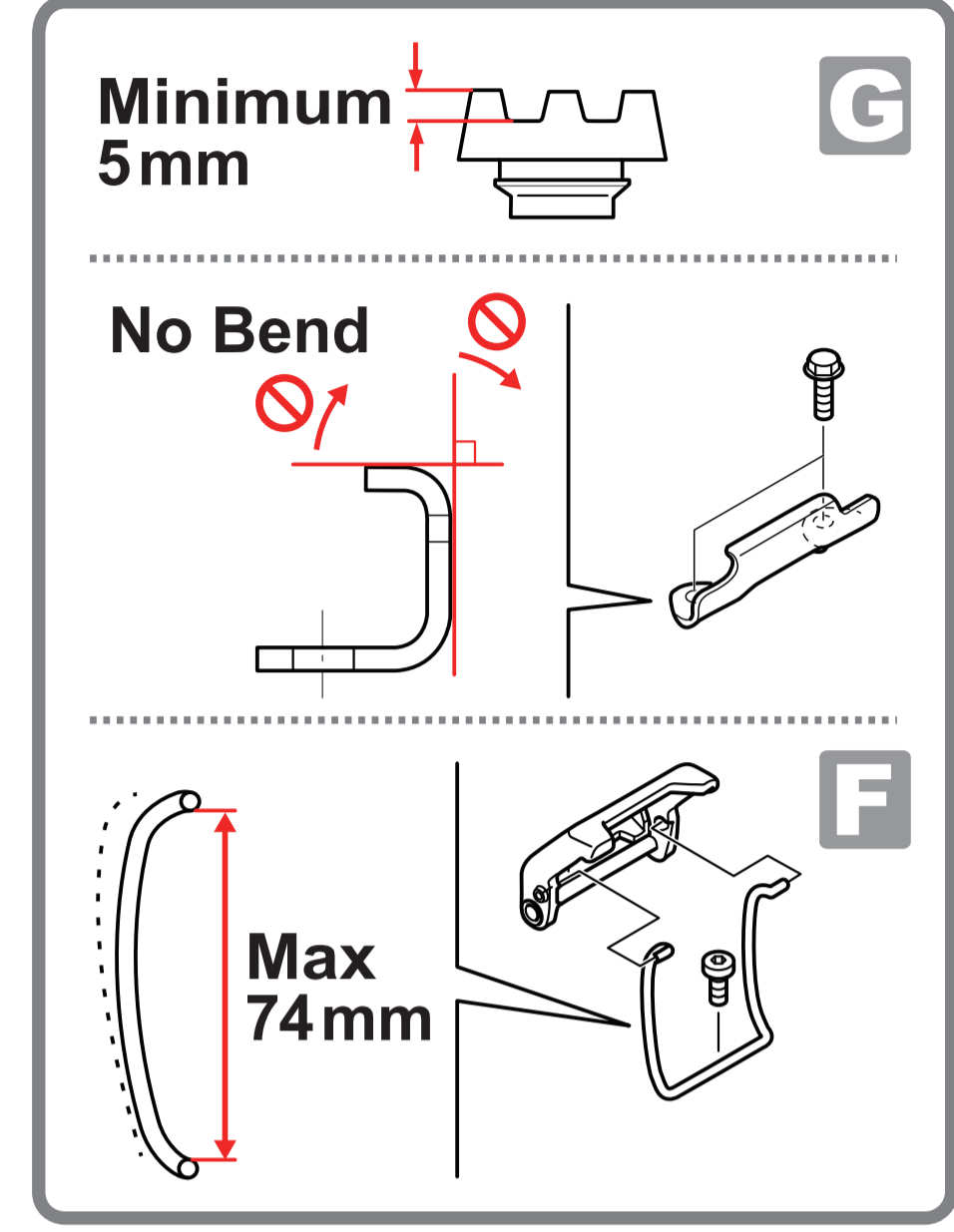
Motor Disassembly/Assembly



Rotor Shaft Removal/Installation



Battery Fastening Component Check



Mount Stay Clearance Check

